



**Got termites?**  
**Get  Xterm!**



**Xterm**<sup>™</sup>

Revolutionary Termite Baiting Technology

[www.xterm.com](http://www.xterm.com)

 SUMITOMO CHEMICAL

# Termites:

## The silent destroyer

Termites are probably your home's worst enemy. They work tirelessly day and night foraging for food. Once they find that scrumptious beam in your house, they will chew it piece by piece, second after second. Before you realise they have invaded your home, it is already too late. The damage has been done.



• TERMITE ALATE & WORKER TERMITE

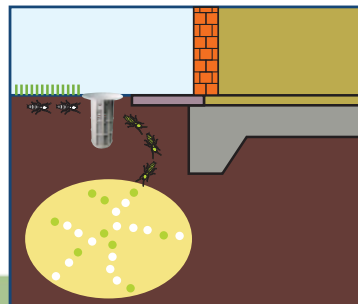


• ANT ALATE

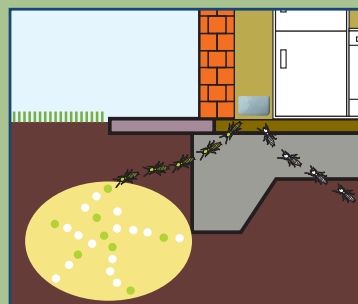
## How do I know if they are termites?

Termites and ants are often mistaken for one another. They can be distinguished by a simple physical inspection:

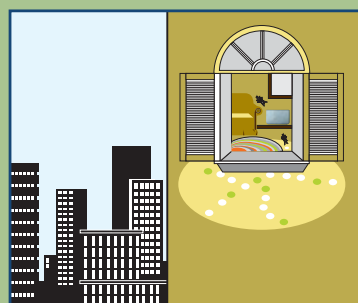
- Termites have straight beaded antennae while ants have elbowed antennae.
- Both termite wings (front and hind) are equal in size while ants have longer front wings and shorter hind wings.
- Termites' waists are thick and less defined while ants possess constricted waists.



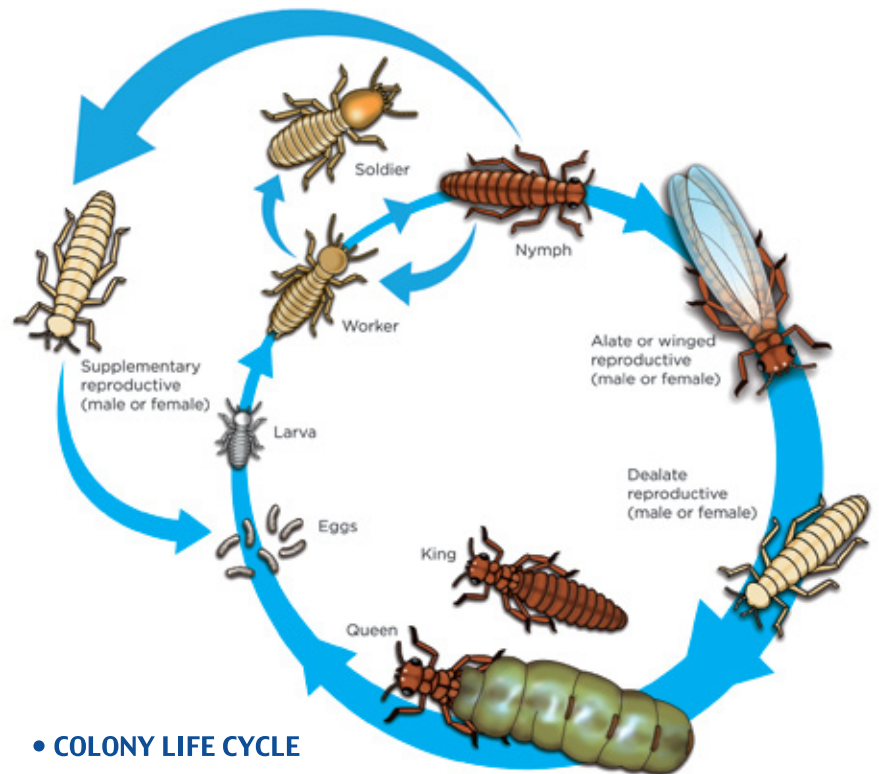
Subterranean termites active in the soil around a landed property are intercepted by Xterm™ IG Bait Station and feed, then travel back to their nest and share the bait with their nestmates.



Subterranean termites that have infested a landed property being lured into Xterm™ AG Bait Station to feed, then travel back to their nest to share the bait with their nestmates.



Subterranean termites in multi-level buildings are lured into Xterm™ AG Bait Station, then travel back to their nest to share the bait with their nestmates.



• COLONY LIFE CYCLE

## What do termites feed on?

Subterranean termites feed exclusively on wood and wood products containing cellulose. In their intestines, termites have protozoa that provide enzymes to digest cellulose. Termites are able to tear off extremely small fragments of wood using their hard, saw-toothed jaws. Termites often infest buildings and damage lumber wood panels, flooring, sheetrock, wallpaper, plastics, paper products and fabric made of plant fibers. The most serious damage results from the loss of structural strength. Other costly losses include attacks on flooring, carpeting, art work, books, clothing, furniture and valuable papers.



## How do I know if my house is infested?

Termites rarely come to the surface to feed. So most of the time, you will only find out that they are there when it's too late. However, there are signs that one can look out for as a warning of their presence.

- Swarmers in or around the house, especially near light sources after rain.
- The presence of mud shelters on foundations or other walls running from the ground upwards in to the house.
- Stray wings left near door and window frames.
- Paint that has started to bubble on wood surfaces that sound hollow when knocked.
- Acoustic signals of termites gnawing on and knocking against wood surfaces.





## Why should I use a bait?

Before baiting became available, conventional termite treatments involved drilling and pumping of chemicals inside and outside the house, leaving large amounts of termiticide in the ground. These chemicals can be detrimental to the environment.

Bait systems are a relatively new tool to remove termites from your home. These normally consist of plastic sleeves which are put in the ground around the house. Commonly, inside these sleeves are pieces of wood, paper, cardboard or any cellulose-based products acting as “monitors” to detect termites. When termites are seen feeding on these stations, the “monitor” is replaced by a bait containing a termiticide.

In addition to monitoring stations around the house, direct placement of baits above ground can also be used to great effect. This method is proactive as bait stations are positioned on sites with termite activity. Termite infestations are treated when seen. Above ground stations do not depend on the termites locating the bait stations. They start working the moment they are installed.

Baits are attractive to the termite workers. Once found, they will “tell” the rest of the colony members about the food source. The message is delivered through a trail of pheromone laid by the workers. This substance is known as pheromone. Other workers then follow this trail that eventually leads them to the new food source.

## What is **unique** about **Xterm™** and how does it work?



Xterm™ Above Ground (AG) Bait Station

- Xterm™ is a revolutionary baiting system incorporating new design features that include the latest highly attractive, fastest acting anti-termite bait matrix.
- The novel Xterm™ compressed bait matrix has allowed the co-development of low profile above ground Xterm™ bait stations that will ensure termite control no longer requires the use of large unsightly bait boxes.
- The Xterm™ system uses bait cartridges loaded with multi-surface tablets, ensuring easy bait acceptance as every termite has a surface to feed on. The in-built hygroscopic nature of the bait allows moisture to penetrate the bait further increasing its palatability.
- The active within Xterm™ is a CSI which when used in the sealed Xterm™ cartridge system ensures an action specific to termites with no effect on non-target organisms or the environment.
- The Xterm™ bait cartridge system allows easy, clean application of bait to the stations as and when required. The “oscillating Xterm™ bait cartridge replacement program” ensures minimum disturbance to feeding termites.

## Pesticides in bait stations

There are two types of chemicals used in bait stations: Insect growth regulators (IGRs) and slow release toxicants. IGRs are hormones specific to insects. In termite baits, IGRs mostly prevent termites from forming new exoskeletons. These are also known as Chitin Synthesis Inhibitors (CSI). After feeding on baits containing CSI, termites cannot moult properly, resulting in their death.

Baits consumed will not kill the termites immediately, giving them ample time to return to their nest and spread the bait amongst their nestmates with the same toxicant. This bait is transferred through the colony until it ultimately implodes and dies.

Xterm™ In Ground (IG) Bait Station



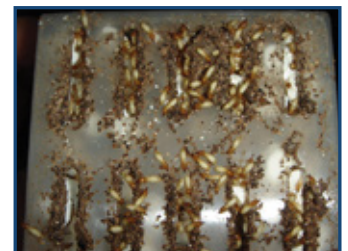
Xterm™ installed in position



Termites feeding on Xterm™ termite bait



Termites completely depleted an entire Xterm™ bait cartridge



Sign of elimination: A lot more soldiers are observed



Sign of elimination: Fungal attack to termite carcasses



## Why choose Xterm™?

- Faster action
- Fuss-free installation
- No drilling/pumping of chemicals inside your home
- Environmentally sound
- Unobtrusive bait station design
- Unique, highly attractive compressed cellulose formulation

## Where and how to get Xterm™?

Xterm is available through pest management professionals. They are trained to handle Xterm and solve your termite infestation problems. Give one of our trained pest management professionals a call today to get your free inspection. Do not become a victim of these destructive creatures! Act now before it is too late!

Authorised Installer:

## [www.xterm.com](http://www.xterm.com)

### **Sumitomo Chemical Asia Pte Ltd**

3 Fraser Street, #07-28 DUO Tower,  
Singapore 189352  
Tel : (65) 6303 5188  
Fax : (65) 6298 9621

### **Sumitomo Chemical Philippines Inc**

18<sup>th</sup> Floor, Philam Life Tower  
8767 Paseo De Roxas  
Makati City, Metro Manila  
1226 Philippines  
Tel : (632) 885 0671 80  
Fax : (632) 885 0630 32

### **Sumitomo Chemical (Thailand) Co. Ltd**

Level 35, Unit 3505, Exchange Tower  
388 Sukhumvit Road  
Klongtoey, Bangkok 10110  
Thailand  
Tel : (66) 2663 4337  
Fax : (66) 2663 4336

### **Sumitomo Chemical Enviro-Agro Asia Pacific Sdn Bhd**

Lot 62A, Persiaran Bunga Tanjung 1  
Senawang Industrial Park  
70400 Seremban, Negeri Sembilan  
Malaysia  
Tel : (606) 679 3711  
Fax : (606) 679 3698

### **Sumitomo Chemical Vietnam Co., Ltd**

Floor 5, 40 Pham Ngoc Thach Street, Ward 6  
District 3, Ho Chi Minh City  
Vietnam  
Tel : (028) 3822 0127, (028) 3822 0129  
Fax : (028) 3822 0131