

 SUMITOMO CHEMICAL

Wazary[®]
10FL



Termite Defence for Your Home



 SUMITOMO CHEMICAL

Wazary® 10FL

is a water-based flowable (suspension) concentrate, an active ingredient Fenvaterate 10.0% which greatly reduces the risks associated with using oil-based termiticide formulas. The main active isomer of Wazary® 10FL containing very high Koc value (soil binding capacity) of 630,597, meaning highly absorbable from water into organic material within soil, allowing it to create a more effective and long residual anti-termite barrier treatment.

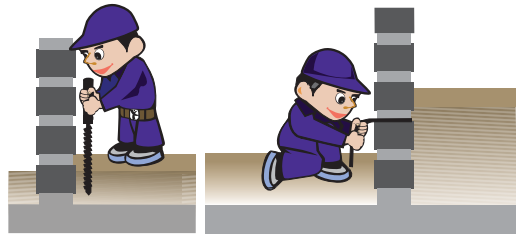
It is a repellent termiticide and virtually odourless.

Wazary® 10FL has also been approved for use in water catchment areas by Singapore's National Environmental Agency (NEA).

Test method (Repellency Test)

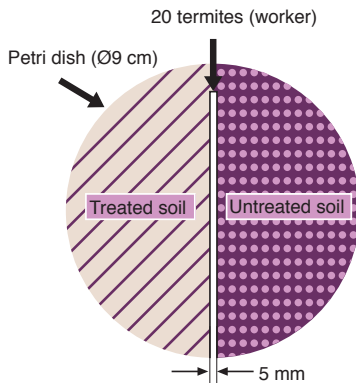
A wet filter paper was placed in a Petri dish. One half of the surface of filter paper was covered with 5g of soil treated with Wazary® 10FL and the other half was covered with 5g of untreated soil. Treated and untreated soils were separated by 5mm as figure shown below.

Twenty Formosan subterranean termites were released in the centre part, between the treated and untreated soil. The results are shown in the table below.



Drill/treat expansion joint

Short rod soil treatment

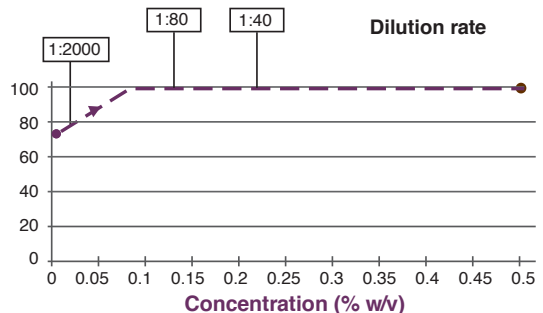


Trench and Rod Soil

Repellent Efficacy of Wazary® 10FL

Product	Concentration as a.i. (%)	Repellency (%)
Wazary® 10FL	0.5	100
	0.25	100
	0.05	88
	0.005	75
Control	0	0

Repellency (%) of Wazary® 10FL



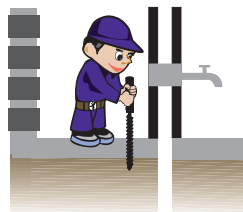
Wazary® 10FL works at very low dosages.

Why Choose Wazary® 10FL

- Long residual efficacy
- Strong repellent and kill efficacy
- Perimeter treatment
- No odour
- Pre- and post-construction treatment
- Protection of building against subterranean termites
- Excellent environmental profile
- Easy to store and handle



Drill/treat hollow blocks



Utility Pipe Treatment



Drill / Treat Under Slab

Regulatory and Technical Support

With a broad and extensive technical experience in the Environmental Health division, we offer the comprehensive product registration package as well as technical support with best use of innovative technologies and formulations to our growing client base from our regional laboratory in Seremban, Malaysia.

Field test of Wazary® 10FL on subterranean termites conducted by the Royal Forest Department, Thailand showed that if applied at 1:40, Wazary® 10FL gives 6 years protection.

Modified ground board tests

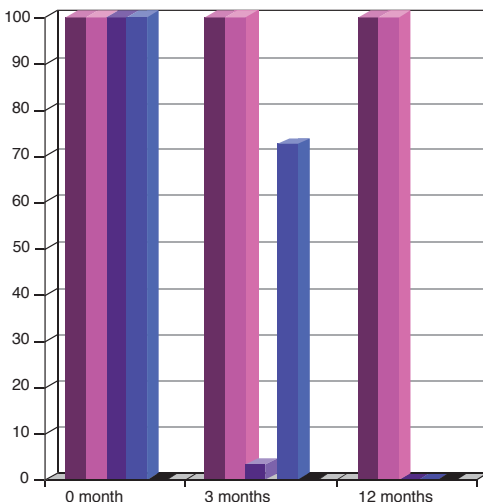
Testing chemical	Average damage (%) on 4 replications					
	Yr 1	Yr 2	Yr 3	Yr 4	Yr 5	Yr 6
Wazary® 10FL 0.5% (Equivalent to 1:40)	0	0	0	0	22.5*	0

Average damage for the Control replicates over this same period was 85.4%. *Data was non-reflective of actual protection efficacy as one of the replicates was damaged.

For long-term protection, Wazary® 10FL should be diluted at the rate of 1 part : 40 parts water and applied according to label recommendations. For shorter term control, dilutions of 1 part Wazary: 80 parts water (3 years structural protection) or 1 part Wazary: 200 parts water (2 years structural protection) may be considered.

Proven wood protection activity - *Coptotermes formosanus* Treatment quantity: 200 mg/ml²

- Wazary 0.25%
- Wazary 0.5%
- Chlordane 1.0%
- Chlordane 2.0%
- Control

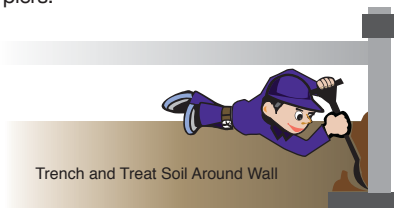


Treatment Applications

Wazary® 10FL should be shaken before use

Pre-construction Treatment

For floor slabs porch floors and entrance platforms, apply diluted Wazary® 10FL at the rate of 4 litres per square metre or 7 litres per square metre if fill is washed gravel or other coarse material. On hollow block foundations, or voids in masonry, apply solution at the rate of 7 litres per three linear meters. In crawl spaces, apply the solution at the rate of 5 litres per linear meter per 30cm of depth from grade to bottom of foundation. Apply the solution on both sides of the foundation with special attention around pipes and piers.



Post-construction Treatment

Apply the solution at the rate of 5 litres per linear metre to trenches dug to the base of the foundation of the building being treated, or via drill holes spaced at 30cm intervals in flooring slabs. Excavated soil should be treated and used as a backfill as well as the soil under and around porches. To avoid exposure of treated soil to direct sunlight, exposed areas may be covered with a thin layer of untreated soil.

Remedial and Spot Treatments

If there is evidence of termite re-infestation after the initial treatment resulting from disruption of the chemical barrier that can arise due to human activity such as excavation, construction and landscaping, or simply following an incomplete initial treatment, retreatment should be made in these areas in accordance with the application techniques described within the Post-construction section.

Please Read and Follow

Product Label Directions and Precautions Before Use.

Contact Us For More Information

Sumitomo Chemical Asia Pte Ltd

3 Fraser Street, #07-28 DUO Tower
Singapore 189352
Tel : (65) 6303 5188
Fax : (65) 6298 9621

Sumitomo Chemical Philippines Inc

Unit 4C, 4th Floor, MAPFRE Insular Corporate Center
1220 Acacia Avenue, Madrigal Business Park, Ayala Alabang
Muntinlupa City
1770 Philippines
Tel : (632) 885 067180
Fax : (632) 885 063032

Sumitomo Chemical (Thailand) Co. Ltd

Level 35, Unit 3505, Exchange Tower
388 Sukhumvit Road
Klongtoey, Bangkok 10110
Thailand
Tel : (66) 2663 4337
Fax : (66) 2663 4336

Sumitomo Chemical Enviro-Agro Asia Pacific Sdn Bhd

Lot 62A, Persiaran Bunga Tanjung 1
Senawang Industrial Park
70400 Seremban, Negeri Sembilan
Malaysia
Tel : (606) 679 3711
Fax : (606) 679 3698

Sumitomo Chemical Vietnam Co., Ltd

Floor 5, 40 Pham Ngoc Thach Street, Ward 6
District 3, Ho Chi Minh City
Vietnam
Tel : (028) 3822 0127, (028) 3822 0129
Fax : (028) 3822 0131



<https://www.sumitomo-chem-envirohealth.com>

Disclaimer

The statements, technical information and recommendations contained herein is to be used only as a guide to assist with the product selection and Sumitomo Chemical makes no representation or warranty as to the completeness or accuracy of the information contained herein. The products and specifications set forth in this brochure are subject to change without notice and Sumitomo Chemical disclaims any and all liability for such changes. Since the conditions and methods of use of the product and of the information referred to herein are beyond our control, Sumitomo Chemical expressly disclaims any and all liability as to any results obtained or arising from any use of the product or reliance on such information; NO WARRANTY OF FITNESS FOR ANY PARTICULAR PURPOSE, WARRANTY OF MERCHANTABILITY OR ANY OTHER WARRANTY, EXPRESSED OR IMPLIED, IS MADE CONCERNING THE GOODS DESCRIBED OR THE INFORMATION PROVIDED HEREIN. IN NO EVENT WILL SUMITOMO CHEMICAL BE LIABLE FOR ANY INCIDENTAL, INDIRECT OR CONSEQUENTIAL DAMAGES ARISING FROM THE SALE OR USE OF ANY PRODUCT.

The information provided herein relates only to the specific product designated and may not be applicable when such product is used in combination with other materials or in any process. All sales of products shall be subject to Sumitomo Chemical's Standard Terms and Conditions of Sale, a copy of which will be provided by Sumitomo Chemical upon request.

*Sumitomo Chemical as used herein refers to Sumitomo Chemical Asia Pte Ltd, each and any subsidiary or holding company from time to time of that company, whether existing now or in the future.



SUMITOMO CHEMICAL